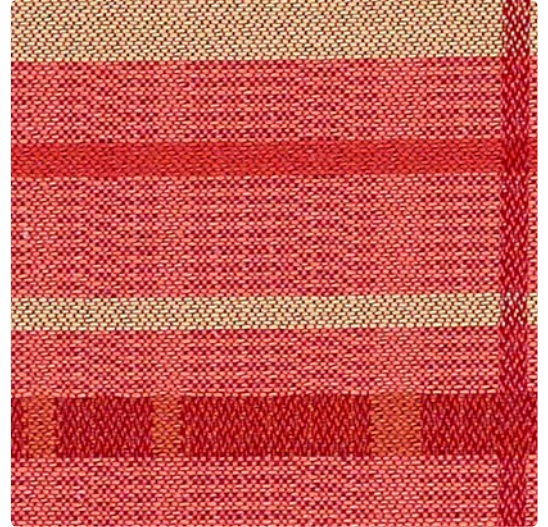


Crypton® Green

with Antimicrobial Silver Ion Technology



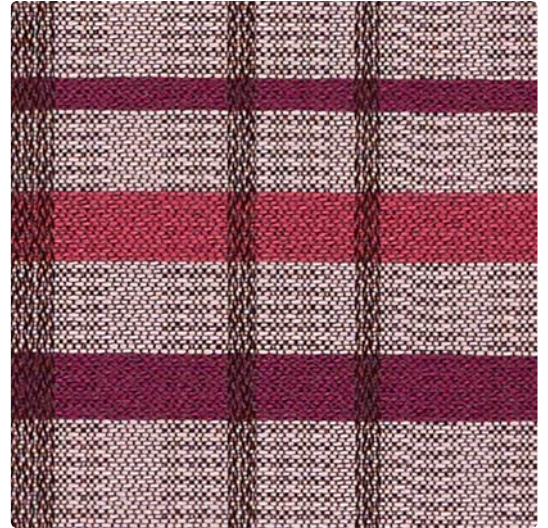
WC707-002
Caramel



WC707-011
Coral



WC707-019
Spice



WC707-001
Mulberry

Application
Upholstery Seating

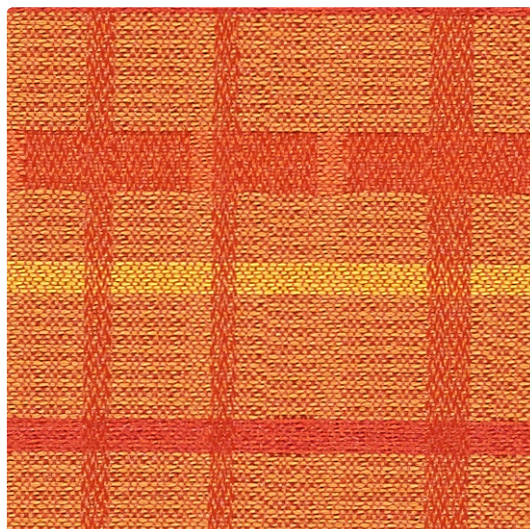
Content
62% Recycled Polyester,
38% Eco-Intelligent Polyester
(Antimony Free)

Width
54 inches / 137 cm

Abrasion (Wyzenbeek/Cotton Duck)
Exceeds 100,000 Double Rubs

Finish
Crypton® Green with Antimicrobial
Silver Ion Technology

Reduced Environmental Impact
GREENGUARD Gold Certified



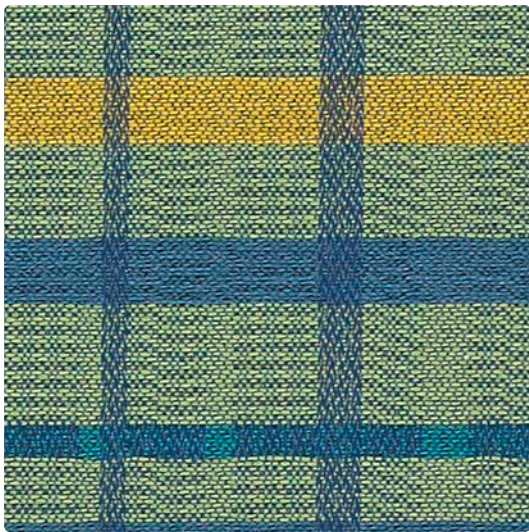
WC707-009
Mango



WC707-000
Blush



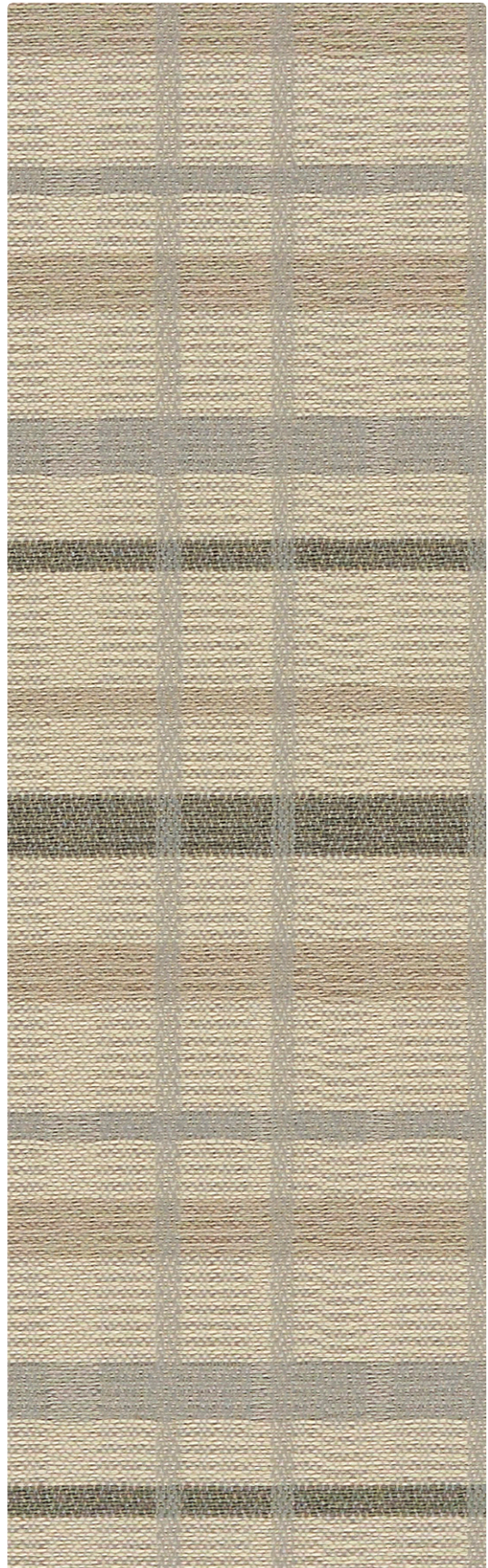
WC707-013
Meadow



WC707-003
Mallard



WC707-004
Cobalt



WC707-017
Stone

TECHNICAL INFORMATIONContent: **62% Post-Consumer Recycled Polyester, 38% Eco-Intelligent Polyester (Antimony Free)**

Width: 54 inches / 137 cm

Weight: 13.3 oz./linear yard / 412.35 g/lm

Backing: **Crypton® Green**Finish: **Crypton® Green** with Antimicrobial Silver Ion Technology

Approx. Repeat: 7.3 in/18.54 cm H, 5.2 in/13.21 cm V

Directional: Yes

Railroaded: No

PERFORMANCESurface Abrasion: Heavy Duty ASTM D4157
(Wyzenbeek/Cotton Duck)**Results**

Exceeds 100,000 Double Rubs

Pilling Resistance ASTM D3511

Class 5

Colorfastness to Crocking AATCC 8

Dry: Grade 4 / Wet: Grade 4

Colorfastness to Light AATCC 16

Grade 5 at 40 hours

FLAMMABILITY

California Technical Bulletin 117-2013

NFPA 260/UFAC Class 1

May comply with California Technical Bulletin 133 when combined with appropriate components.

REDUCED ENVIRONMENTAL IMPACT**This product is GREENGUARD Gold Certified for low chemical and particle emissions to UL standard UL 2818 and may contribute to LEED certification. For complete information visit mayerfabrics.com and UL.com/gg.****Antimony Free Heavy Metal Free**

The Facts icon indicates that a textile has been evaluated based on the requirements of the multi-attribute sustainability standard NSF/ANSI 336 through an independent third-party certification body authorized by the Association for Contract Textiles.

CLEANING INFORMATION

C: Crypton Cleaning

BC: Bleach Cleanable – 1 part bleach, 9 parts water = 10% bleach, 90% water solution. **Do not clean/disinfect fabric for longer than 10 minutes using the 10% bleach solution. Always rinse promptly with clean water after applying the bleach solution. Failure to do so will void any and all warranties.****ADDITIONAL INFORMATION****Custom Capabilities:** All patterns can be custom colored. Minimum yardage applies.**Digital Swatch Card Color Matching:** Due to color variations on different monitors and color printers, actual swatch colors may vary slightly. Please request a memo sample from Mayer Fabrics to ensure proper color representation.**Specifications:** Specifications are correct at the time of printing. Current specifications are available on our website.This fabric meets or exceeds these ACT performance guidelines.
Certification Marks owned by ACT

TATTERSALL – Approx. Repeat: 7.3 in/18.54 cm H, 5.2 in/13.21 cm V

**MAYERFABRICS**