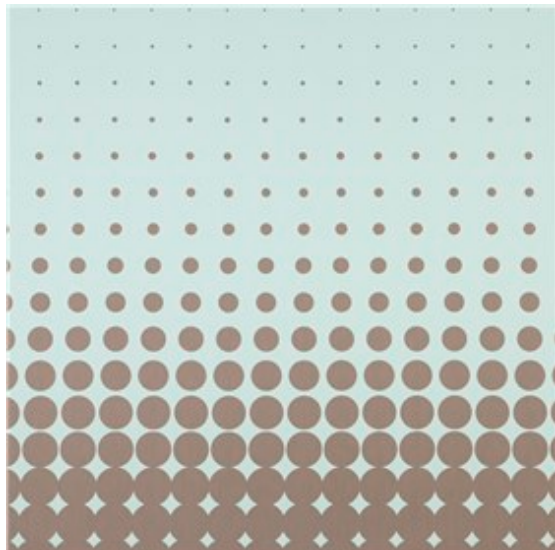


Architex®

CERTIFICATE OF FLAME RESISTANCE + SPECIFICATIONS

Architex International hereby certifies that the fabric described passes the following flame resistance specifications:

RX 1002



© Architex 2022



Characteristics

Usage: Privacy Curtain, Panel, Cruise Ship (IMO)

Width: 72" (182.88 cm)

Repeat: 4.7" V, 72" H (11.938cm V, 182.88 cm H)

Railroaded: Yes, Reverse Repeat

Content: 100% Trevira CS

Backing: None

Weight: 0.87 lb/ly (394.625 gr/lm)

Country Of Origin: Germany

Performance

Finish: No Finish

Lightfastness: 40 hours; Method AATCC 16

Flammability: ASTM E84 (unadhered), CAL Title 19 ,
CAN2-4.162-M80 , CAN/ULC-S109 , German DIN 4102 , IMO Part
7 , NFPA 701

Sustainability

Contains FR Additives
Kaiser Approved Product
Oeko-Tex 100 Certified
Proposition 65 Compliant

Warranty

See [Terms of Use and Sale](#) for more information.

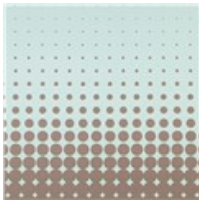
Notes

Disposable options for this pattern are available. Please contact your sales representative.

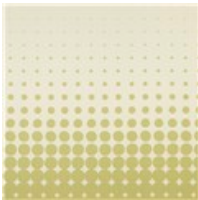
Notes

Architex®

RX 1002 COLORWAYS



Blissful Blue



Luck



Whisper