

# Architex®

## CERTIFICATE OF FLAME RESISTANCE + SPECIFICATIONS

Architex International hereby certifies that the fabric described passes the following flame resistance specifications:

### RX 1006



© Architex 2022



### Maintenance + Cleaning

W. Ozone - Based Cleanable

Consult a professional prior to cleaning. Washable to 160\*. Pre-test one panel before processing entire lot. When washing, process as ordinary colored fabric, temperature not to exceed 160\* F. Wash only with like material. Do not use caustic soap or bleach. Do not put through a mangler. Promptly remove from dryer. If necessary, light touch up with a hand iron (275\* F maximum) is suitable. Avoid prolonged contact with heat.

### Notes

---

---

---

---

---

---

---

---

### Characteristics

**Usage:** Privacy Curtain, Panel, Cruise Ship (IMO)

**Width:** 72" (182.88 cm)

**Repeat:** 39.5" V, 9.25" H (100.33cm V, 23.495 cm H)

**Railroaded:** Yes, Reverse Repeat

**Content:** 100% Trevira CS

**Backing:** None

**Weight:** 0.839 lb/ly (380.564 gr/lm)

**Country Of Origin:** Germany

### Performance

**Finish:** No Finish

**Lightfastness:** 40 hours; Method AATCC 16

**Flammability:** ASTM E84 (unadhered), CAL Title 19 , CAN2-4.162-M80 , CAN/ULC-S109 , German DIN 4102 , IMO Part 7 , NFPA 701

### Sustainability

Contains FR Additives  
Kaiser Approved Product  
Oeko-Tex 100 Certified  
Proposition 65 Compliant

### Warranty

See [Terms of Use and Sale](#) for more information.

### Notes

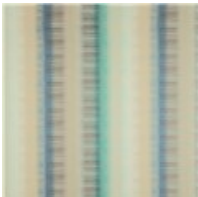
Disposable options for this pattern are available. Please contact your sales representative.

# Architex®

## RX 1006 COLORWAYS



Equilibrium



Wavelength